



TWIN SPHERE RUBBER EXPANSION JOINT

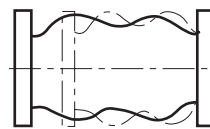
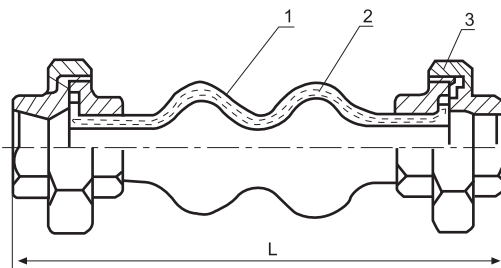
DESCRIPTION

Large pressure resistance (bursting pressure, more than 30kg/cm²)
Effective for large eccentricity thermal and bending angle.
Superb absorption of vibration.
Superb resistance to water, heat, weather and chemicals.
Low cost installation and operation.

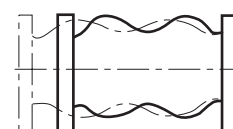


TYPICAL APPLICATIONS

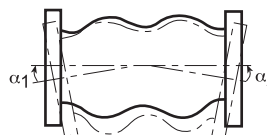
1. Building equipment, piping systems for industrial plants and piping systems for private residences
2. Prevention of disasters due to earthquakes and subsidence of ground
3. Waterworks, sewerage and sanitary lines (fresh-water and drainage)



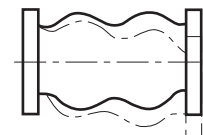
Axial Compression



Axial Stretch



Angle Of Deflection



Lateral Displacement

TYPE FTU

DN	(L) INSTALLED LENGTH (MM)		ALLOWABLE MOVEMENTS FROM NEUTRAL			
	Natural Length	Minimum Maximum Installed	Axial Compression	Axial Extension	Lateral Deflection	Angular Deflection
15	200	186-206	22	6	22	20°
20	200	150-169	22	6	22	20°
25	200	155-175	22	6	22	20°
32	200	160-179	22	6	22	20°
40	200	165-185	22	6	22	20°
50	200	196-215	22	6	22	20°
65	240	207-227	22	6	22	20°
80	240	209-229	22	6	22	20°

OPERATING CONDITIONS

Burst pressure: 30kg/cm² (710psi)
Temperature: -10°C to 80°C
Fluids: Water, sea water weak acid, compressed air etc

NO.	Part	Material
1	Rubber (inner & outer)	EPDM
2	Reinforcing fabric	Nylon fabric
3	Union threads	Galvanized Malleable Iron