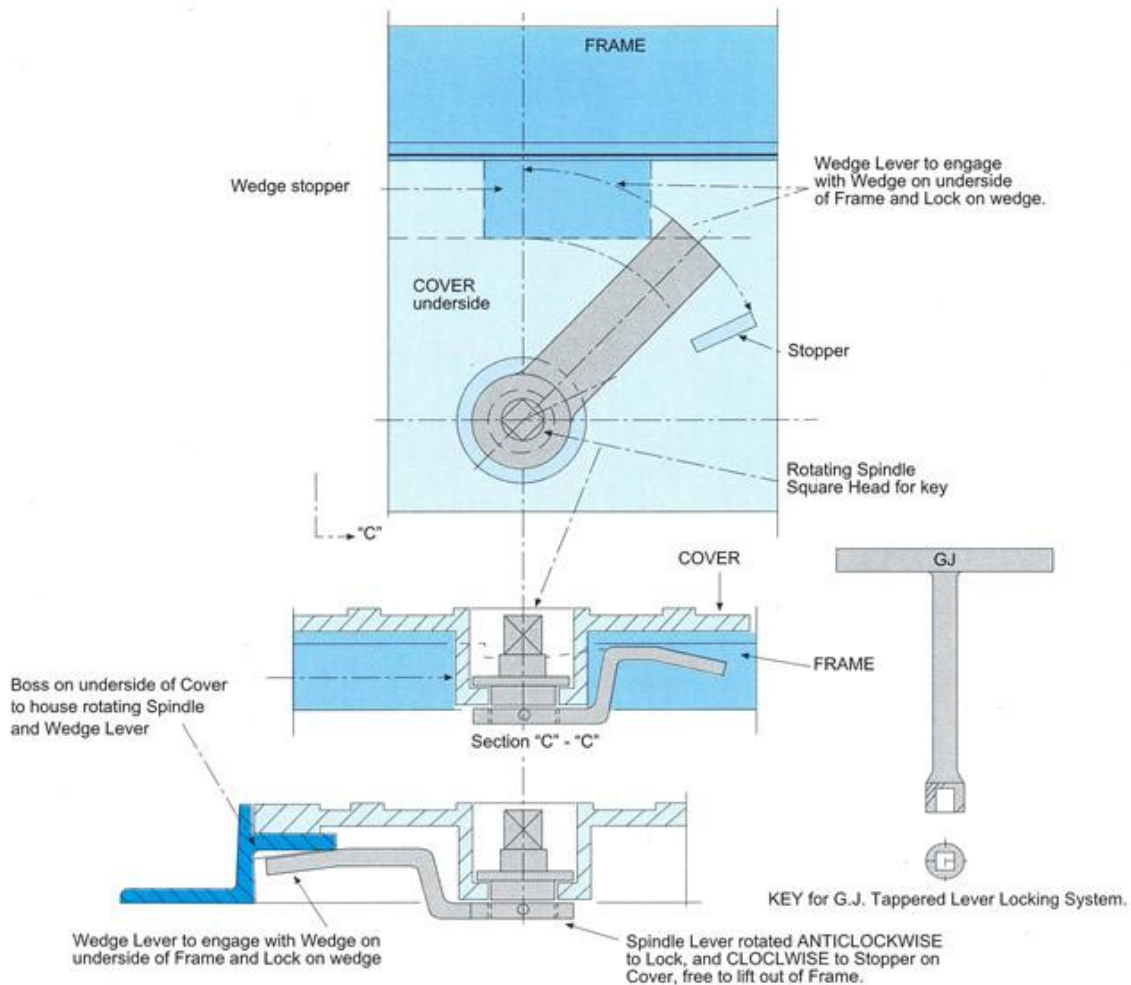




G.J. ROTATING TAPERED LEVER WEDGE LOCKING SYSTEM

for all Rectangular & Square Manhole Covers and Frames.
Patent 2002/8321 Material: SG Iron (Ductile Iron to BS. 1247)



Operation:

Two G.J. Wedge Lock Systems are fitted (Optionally) to each Cover and Frame, situated opposite each other. they operate on the G.J. Wedge Lock system, whereby a Wedge lever with a Spindle, that can rotate it, is housed in a boss cast on Cover. 2 - Wedges are cast opposite each other, on underside of Frame ledge, to enable the corresponding Wedge lever to engage and Lock.

To Lock Cover to Frame:

Place Cover into Frame with both Levers in Open position fixed by a stopper cast on Cover. A G.J. Key as shown above, is fitted onto 2 - Spindle fitted to Cover, - simultaneously. Turning Key ANTICLOCKWISE Spindle will rotate and engage with corresponding Wedge on underside of Frame. And will Lock, when tightened and engage with corresponding Wedge on underside of Frame. And will Lock, when tightened. this will prevent rocking, and deter theft, as Cover and Frame become a intergral unit.

To Lift Cover out of Frame:

To remove Cover from Frame, use G.J. key to rotate 2 - Spindles and levers simultaneously CLOCKWISE to stopper completely. When both are in this position free of Frame, Cover can only be Lifted out. With the Covers and Frames cast in SG Iron they will not break in transit, or broken by thieves because they become a intergral unit, for Scrap purposes, in the case of theft. As they can do with brittle Cast Iron Covers and Frames even if a Locking system is fitted to them.